

JT5 Modular Jaguar Bellhousing for the 4.2L and 3.8L engine.

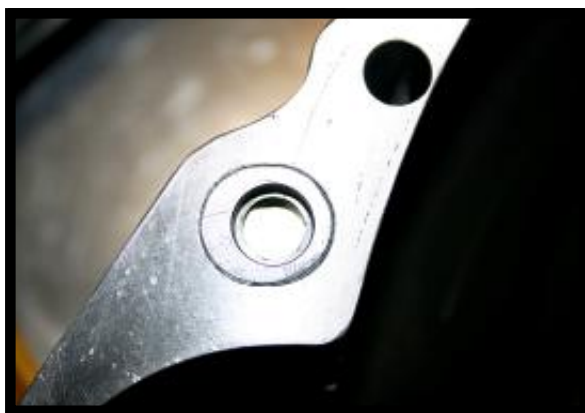
patent pending

There are basically two factory E-Type Jaguar 4 speed bellhousings. The difference between them are the starter locations. The 3.8L starter mounts further away then the 4.2L starter. This means that the stock 4.2L starter must mount to a 4.2L bellhousing with a 4.2L flywheel. The JT5 Modular bellhousing was designed by us to solve the problem of people using the wrong starter / flywheel combination or basically ordering the wrong bellhousing. We felt that one should not have to pull the whole transmission and engine out of the car because they installed the wrong flywheel or bellhousing.



**Starter Pocket
Inserts**

Designed by Paul Cangialosi, who designed the JT5 5 speed, simple inserts fit one way for the 4.2L and are flipped and inverted for the 3.8L. The housing also incorporates pads to mount Quarter Master Trilite internal hydraulic release bearings for road race applications or general use in kit car applications. Simply install inserts for desired combination and use blue threadlocker to secure them in place.



4.2L Location



3.8L Location